

# MIND THE GAP

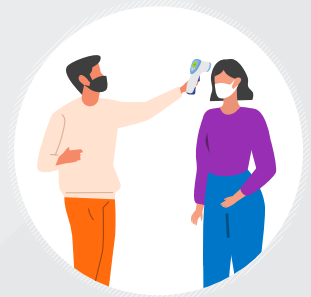
## Safe Management Measures at Retail Establishments and Lifestyle-Related Services



All malls and large standalone stores >930 sqm of Gross Floor Area (GFA) can only allow 1 person per 10 sqm of GFA



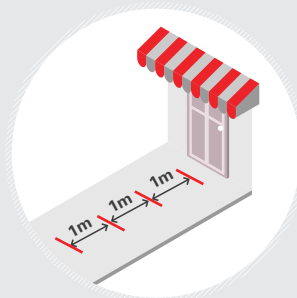
All malls, standalone stores, supermarkets, beauty services outlets, and other large retail stores >930 sqm of GFA must implement SafeEntry for contact tracing



All malls, standalone stores, supermarkets and beauty services outlets must conduct temperature screening and check for visible symptoms



Customers, staff and delivery personnel to wear masks at all times



Demarcate queue lines clearly



Ensure at least 1m spacing between customers at all times



Remove product samples and testers



Disinfect common areas and clean high touch items frequently



For more information, visit

[enterprisesg.gov.sg/covid-19/safe-distance](https://enterprisesg.gov.sg/covid-19/safe-distance)



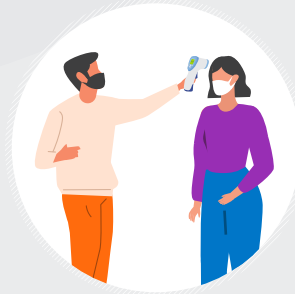
Please contact us at [go.gov.sg/sdenquiries](https://go.gov.sg/sdenquiries) for any feedback.

# MIND THE GAP

## Safe Distancing Measures for Consumers at Retail Establishments



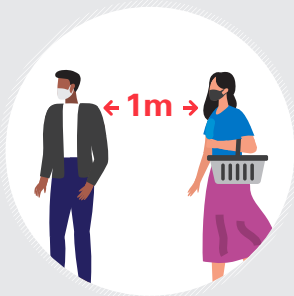
**Wear mask at all times**



**Allow staff to take your temperature**



**Scan QR code or allow staff to scan your ID for contact tracing**



**Keep at least 1m away from other people**



**Make online purchases and have it delivered whenever possible**



**Avoid crowded places. Shop during off-peak hours**



**Do shopping alone, if you can**



For more information, visit

[enterprisesg.gov.sg/covid-19/safe-distance](https://enterprisesg.gov.sg/covid-19/safe-distance)



Please contact us at [go.gov.sg/sdenquiries](https://go.gov.sg/sdenquiries) for any feedback.

# MIND THE GAP

## Safe Management Measures at Food & Beverage Establishments



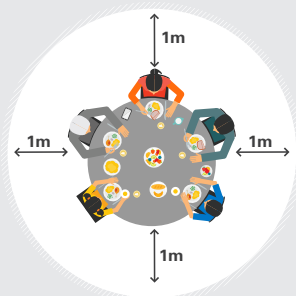
Customers, staff and delivery personnel to wear masks at all times, except when eating or drinking



All F&B outlets with seated diners must implement contact tracing (using SafeEntry), conduct temperature screening and check for visible symptoms



Ensure at least 1m spacing between customers at areas such as entrances and cashier counters



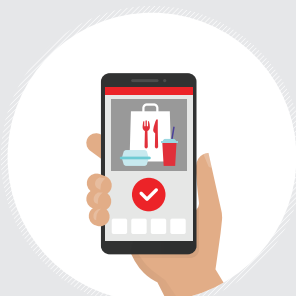
Limit each table/group to 5 or fewer persons, with at least 1m spacing between tables/groups



No self-service buffets



No public entertainment such as live music, radio broadcast, TV/video screenings and karaoke



Implement mobile ordering, pre-ordering, electronic reservation systems and contactless payment, where possible



Disinfect common areas and clean high touch items frequently



For more information, visit

[enterprisesg.gov.sg/covid-19/safe-distance](https://enterprisesg.gov.sg/covid-19/safe-distance)



Please contact us at [go.gov.sg/sdenquiries](https://go.gov.sg/sdenquiries) for any feedback.

# MIND THE GAP

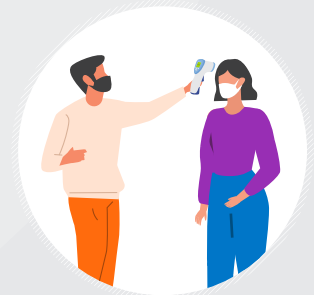
## Safe Management Measures at Retail Establishments and Lifestyle-Related Services



All malls and large standalone stores >930 sqm of Gross Floor Area (GFA) can only allow 1 person per 10 sqm of GFA



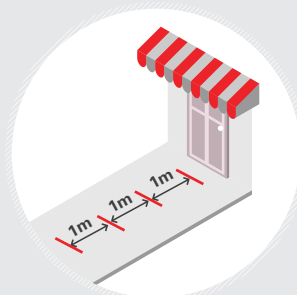
All malls, standalone stores, supermarkets, beauty services outlets, and other large retail stores >930 sqm of GFA must implement SafeEntry for contact tracing



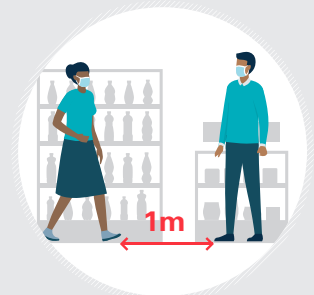
All malls, standalone stores, supermarkets and beauty services outlets must conduct temperature screening and check for visible symptoms



Customers, staff and delivery personnel to wear masks at all times



Demarcate queue lines clearly



Ensure at least 1m spacing between customers at all times



Remove product samples and testers



Disinfect common areas and clean high touch items frequently



For more information, visit

[enterprisesg.gov.sg/covid-19/safe-distance](https://enterprisesg.gov.sg/covid-19/safe-distance)



Please contact us at [go.gov.sg/sdenquiries](https://go.gov.sg/sdenquiries) for any feedback.